



**LIVE IN A COZY 8-APARTMENT HOUSE ON LISI**



# ABOUT PROJECT

**Rema Group** is a real estate development management company that has been working in the development sector for 4 years and has implemented several residential, commercial and public building projects.

The company is developing a new residential building on Lisi, IX lane of Tsatskhvebi street, one of the most developing and prestigious areas of the city.

The project is a boutique type 8 apartment house consisting of 4 floors. Apartments are planned on three floors and parking lots on underground floor.

Construction has started. The project will be completed in March 2025 and the residents will be able to start the renovation works from December 2024.

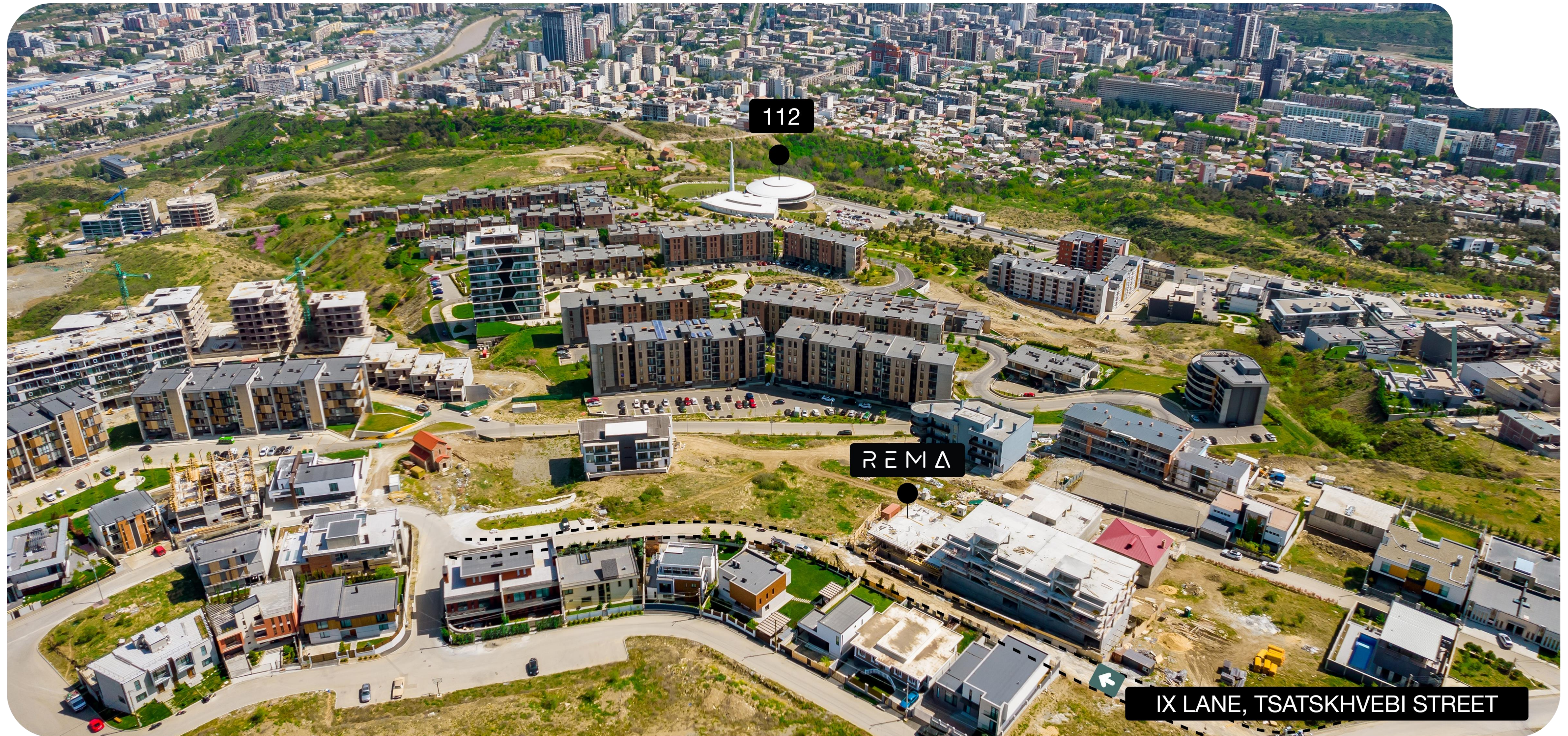
The sales and marketing of the project is managed by the Georgian real estate agency - **GREa** in partnership with the company Rema.

REM Δ





# LOCATION



REM Δ

The project is distinguished by its location, it is located in a quiet and cozy environment with low development.



# VIEW



REMA

The building offers exceptional views of the entire Tbilisi and the Lisi Valley. This is one of the most ecological residential areas of the city.



# ELEGANT ARCHITECTURE

The project is distinguished by elegant architecture and high quality finishing materials.

The main cladding material for the facades is natural travertine stone slabs, composite wood elements and perforated metal railings.

The measured color range and minimalist solutions give the house a light and distinctive look.

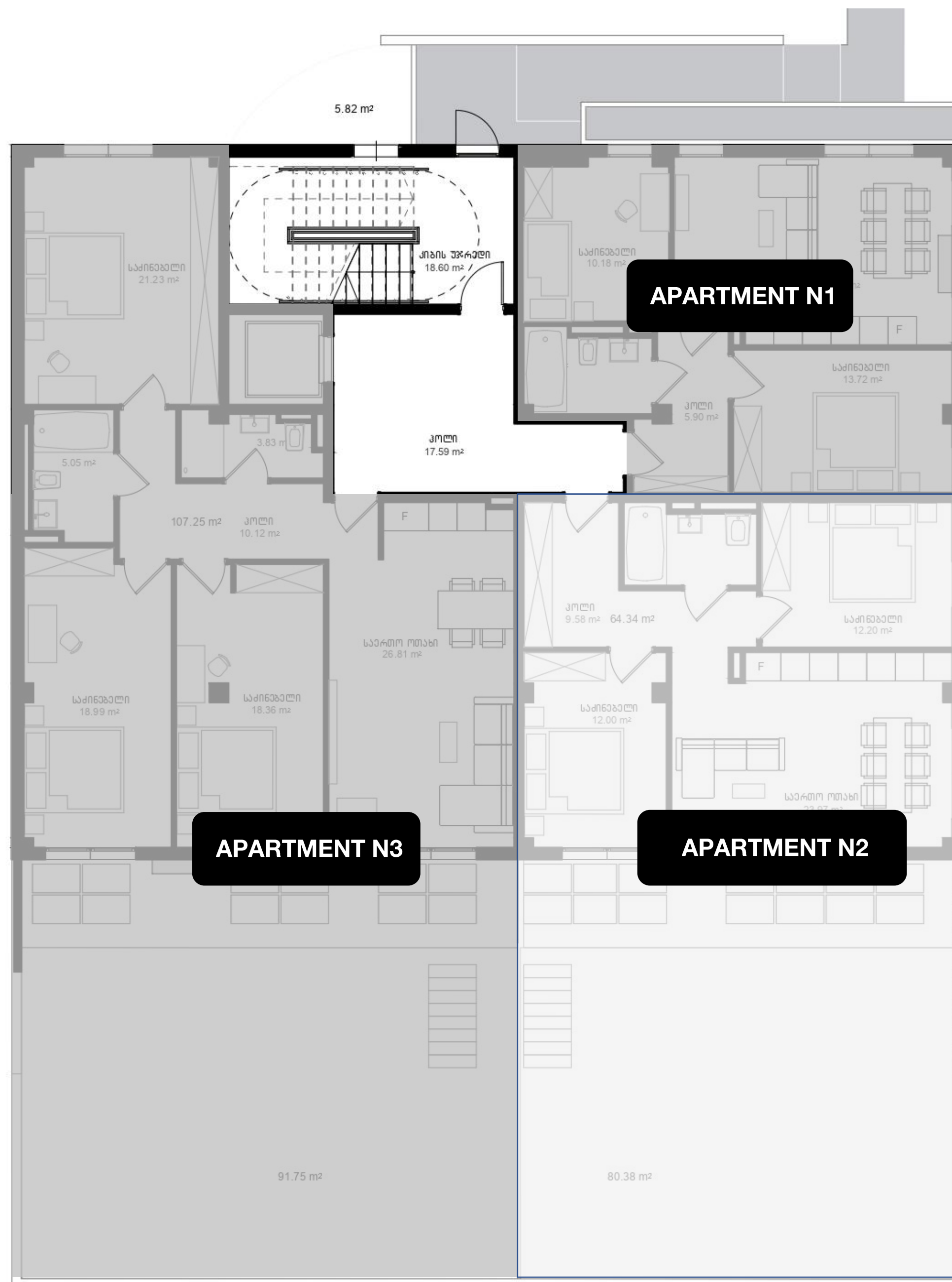
REM Δ





SELECT AN APARTMENT

I FLOOR



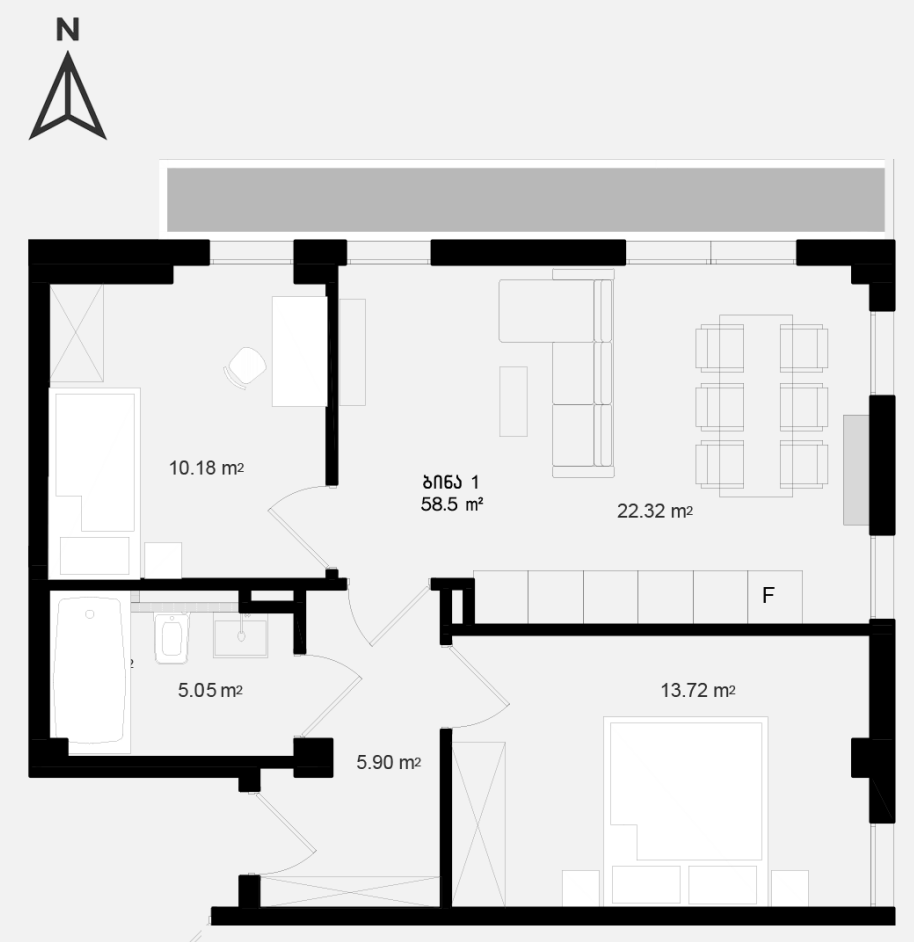


## I FLOOR - APARTMENT N1

2 BEDROOMS - 58.5 SQ.M

📍 Price per sq.m - **1550\$**

📍 The total price of the apartment - **90.675\$**

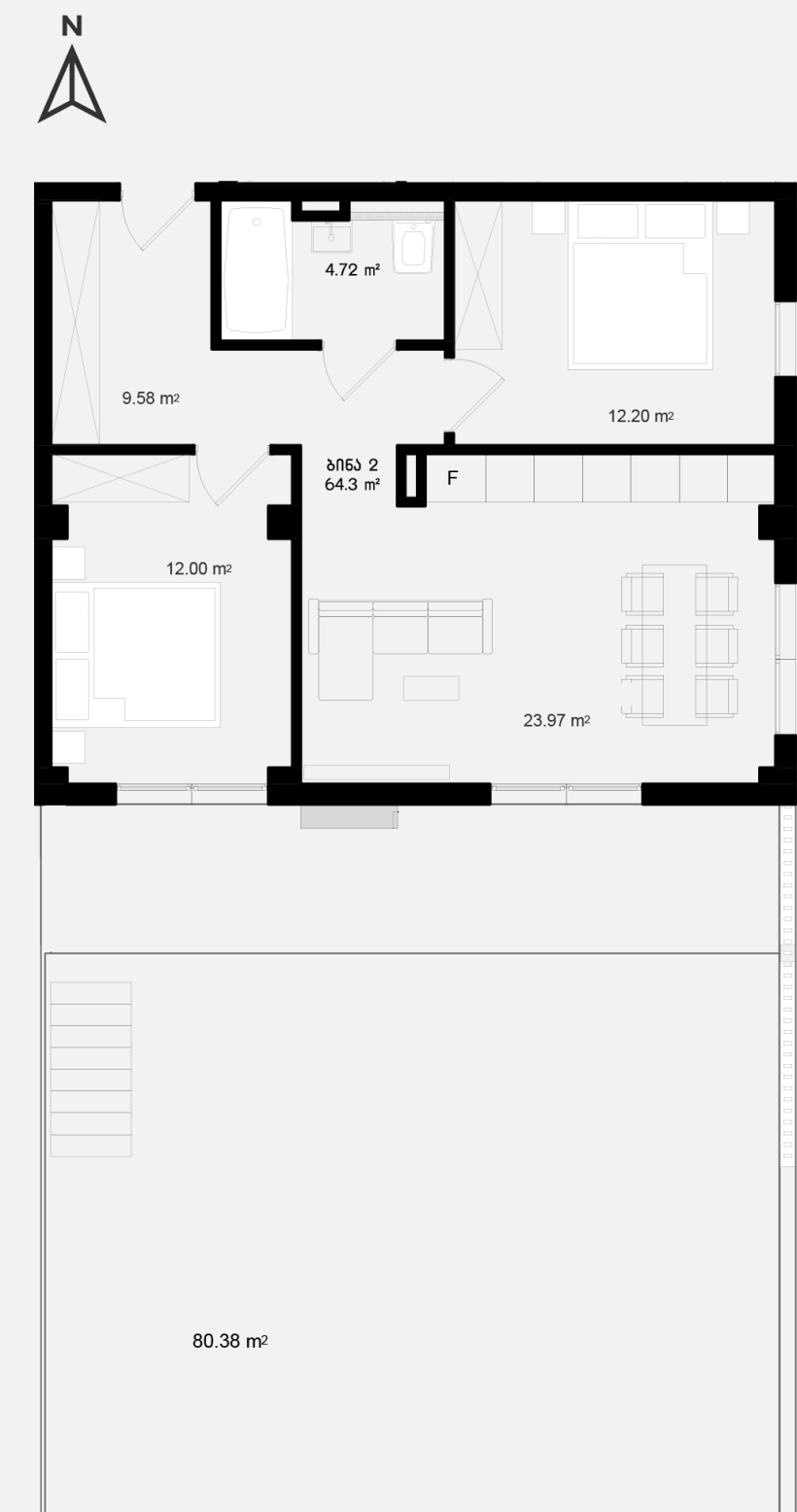




# I FLOOR - APARTMENT N2

2 BEDROOMS - 64.3 SQ.M  
YARD - 80.4 SQ.M

- Price per sq.m - 1600\$
- Yard price - 25.800\$
- The total price of the apartment - 128.600\$

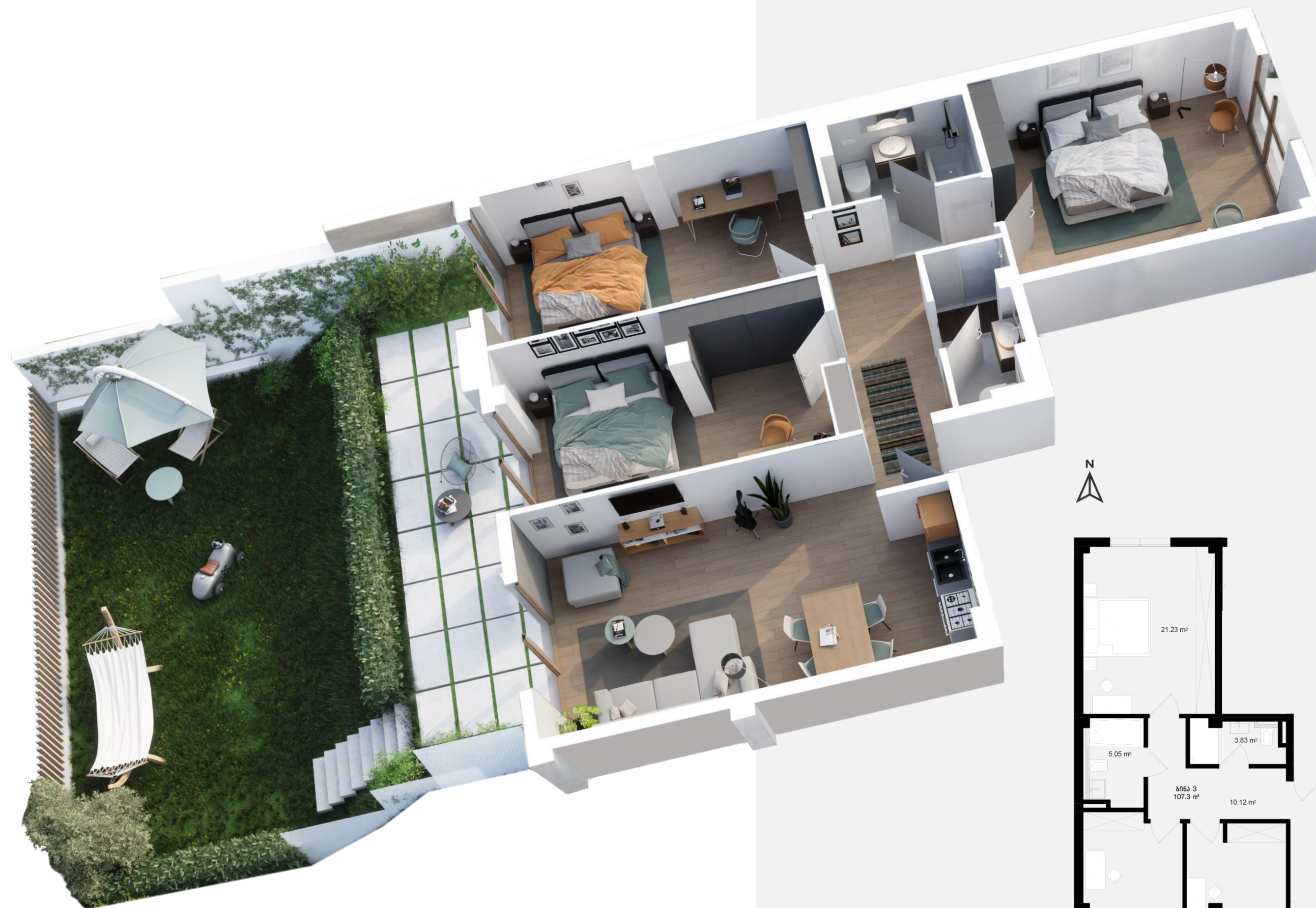




## I FLOOR – APARTMENT N3

3 BEDROOMS - 107.3 SQ.M.  
YARD - 91.8 SQ.M.

- Price per sq.m - **1600\$**
- Yard price - **29.400\$**
- The total price of the apartment - **201.000\$**





SELECT AN APARTMENT

II FLOOR

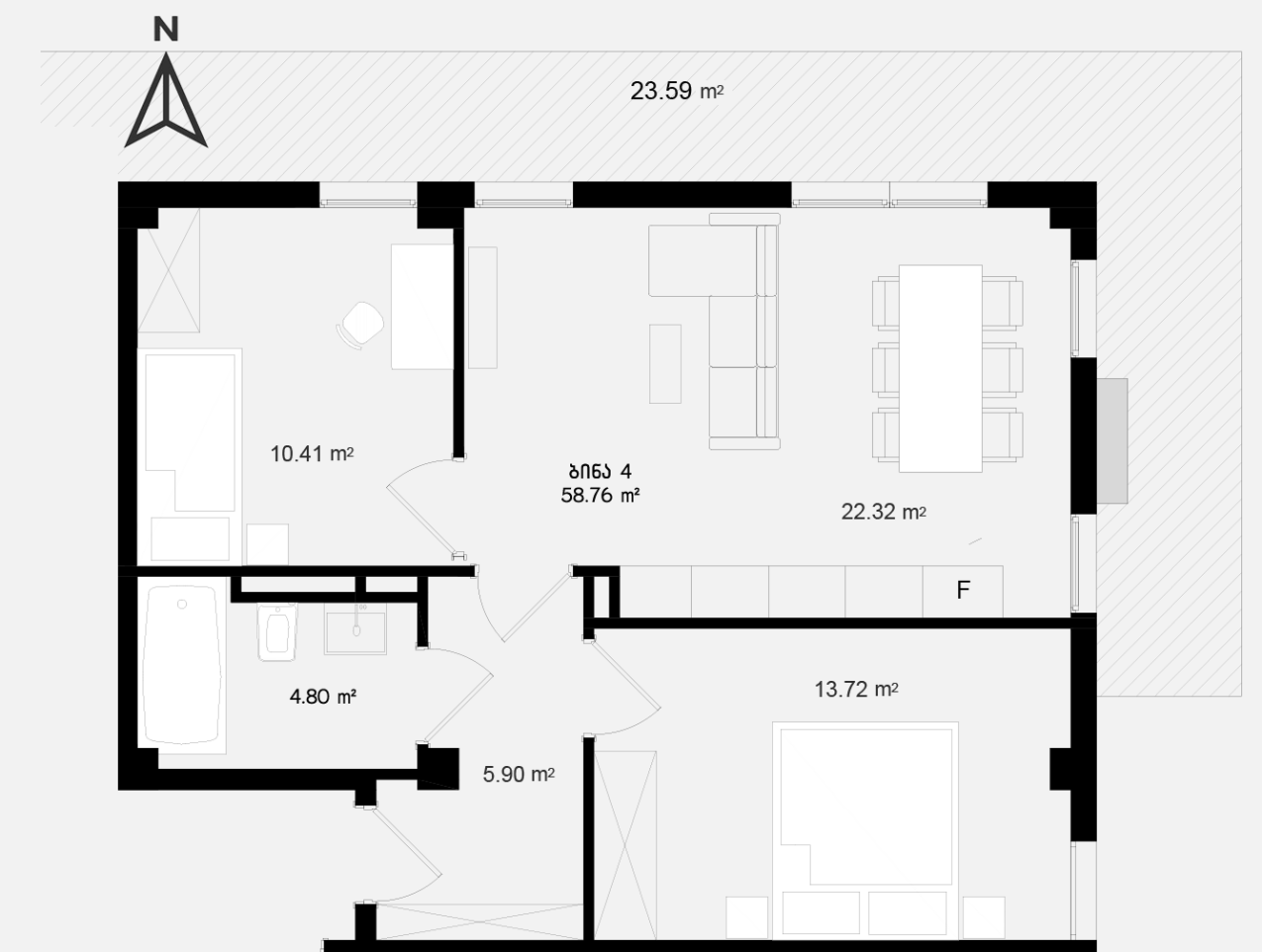




## II FLOOR - APARTMENT N4

2 BEDROOMS - 82.4 SQ.M

- Price per sq.m - **1650\$**
- Price per sq.m of the Balcony - **1320\$**
- The total price of the apartment - **128.172\$**





II FLOOR - APARTMENT N5

2 BEDROOMS - 78.2 SQ.M.

- Price per sq.m - 1600\$
- The total price of the apartment - 125.120\$





## II FLOOR - APARTMENT N6

3 BEDROOMS - 138.4 SQ.M.

- Price per sq.m - **1650\$**
- Price per sq.m of the Balcony - **1320\$**
- The total price of the apartment - **218.097\$**





SELECT AN APARTMENT

III FLOOR

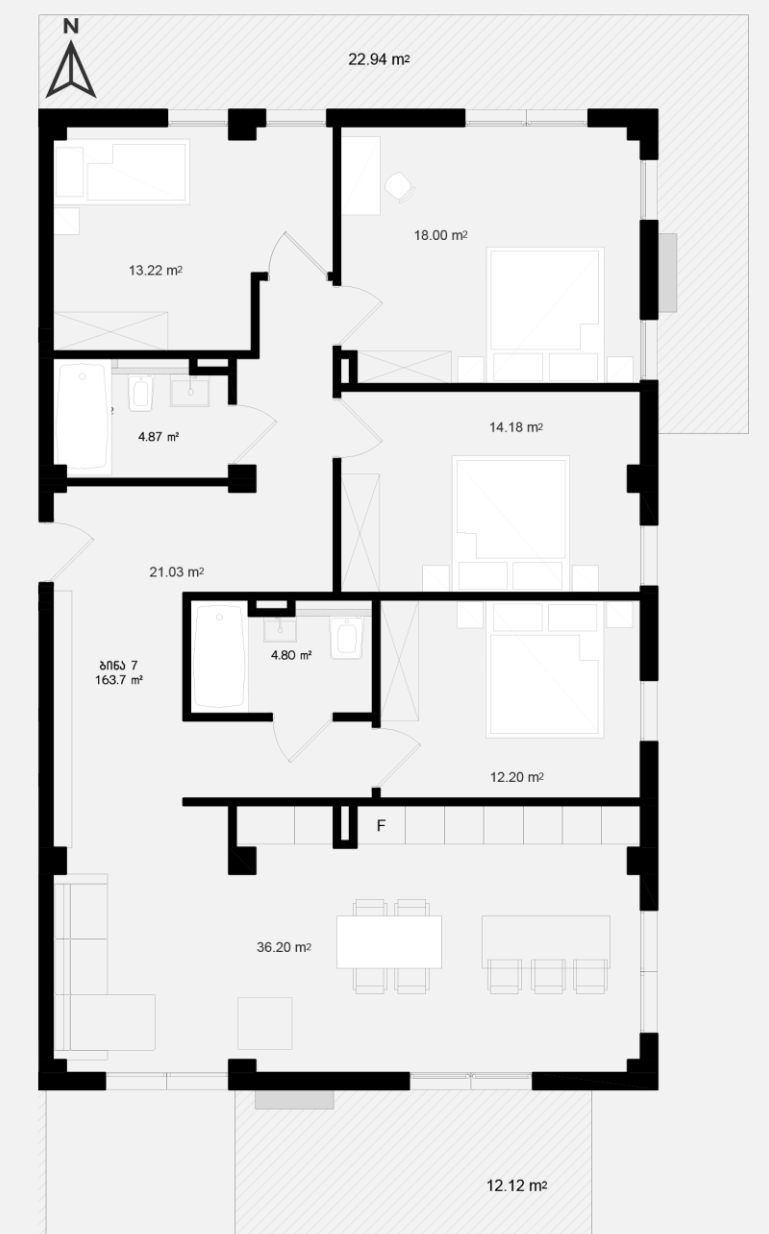




## III FLOOR - APARTMENT N7

4 BEDROOMS - 163.7 SQ.M

- Price per sq.m - **1700\$**
- Price per sq.m of the Balcony - **1360\$**
- The total price of the apartment - **266.470\$**

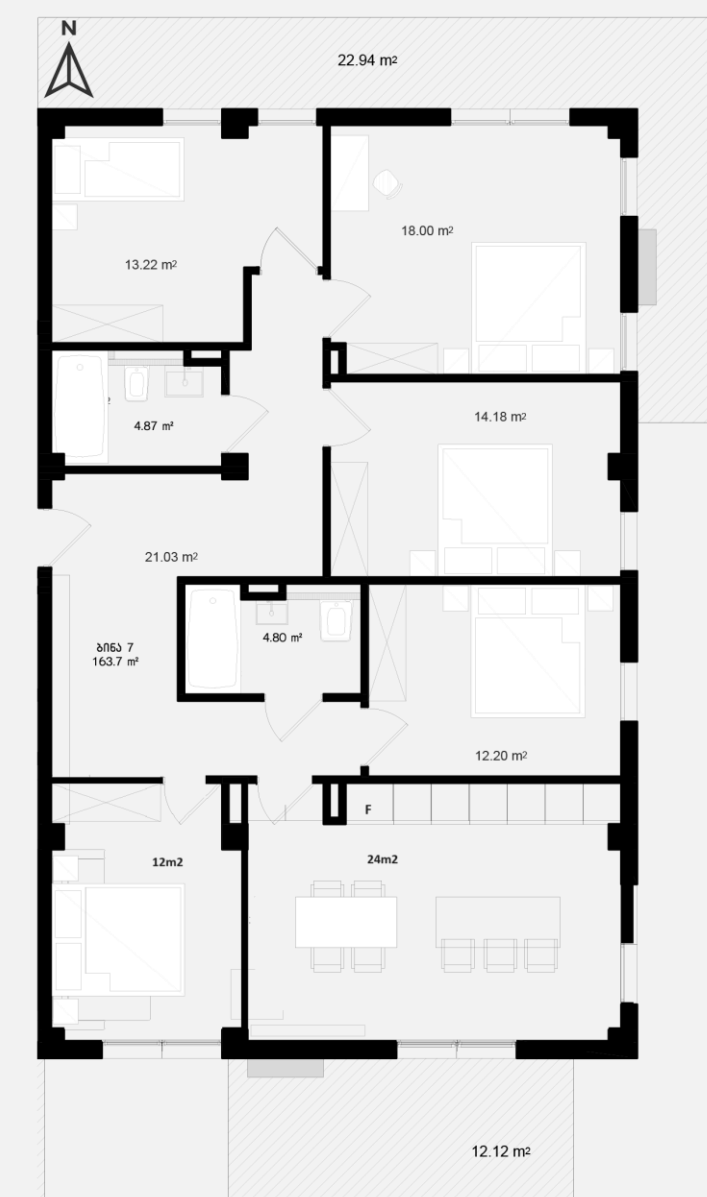




## III FLOOR - APARTMENT N7 (VERSION 2)

5 BEDROOMS - 163.7 SQ.M

- Price per sq.m - **1700\$**
- Price per sq.m of the Balcony - **1360\$**
- The total price of the apartment - **266.470\$**

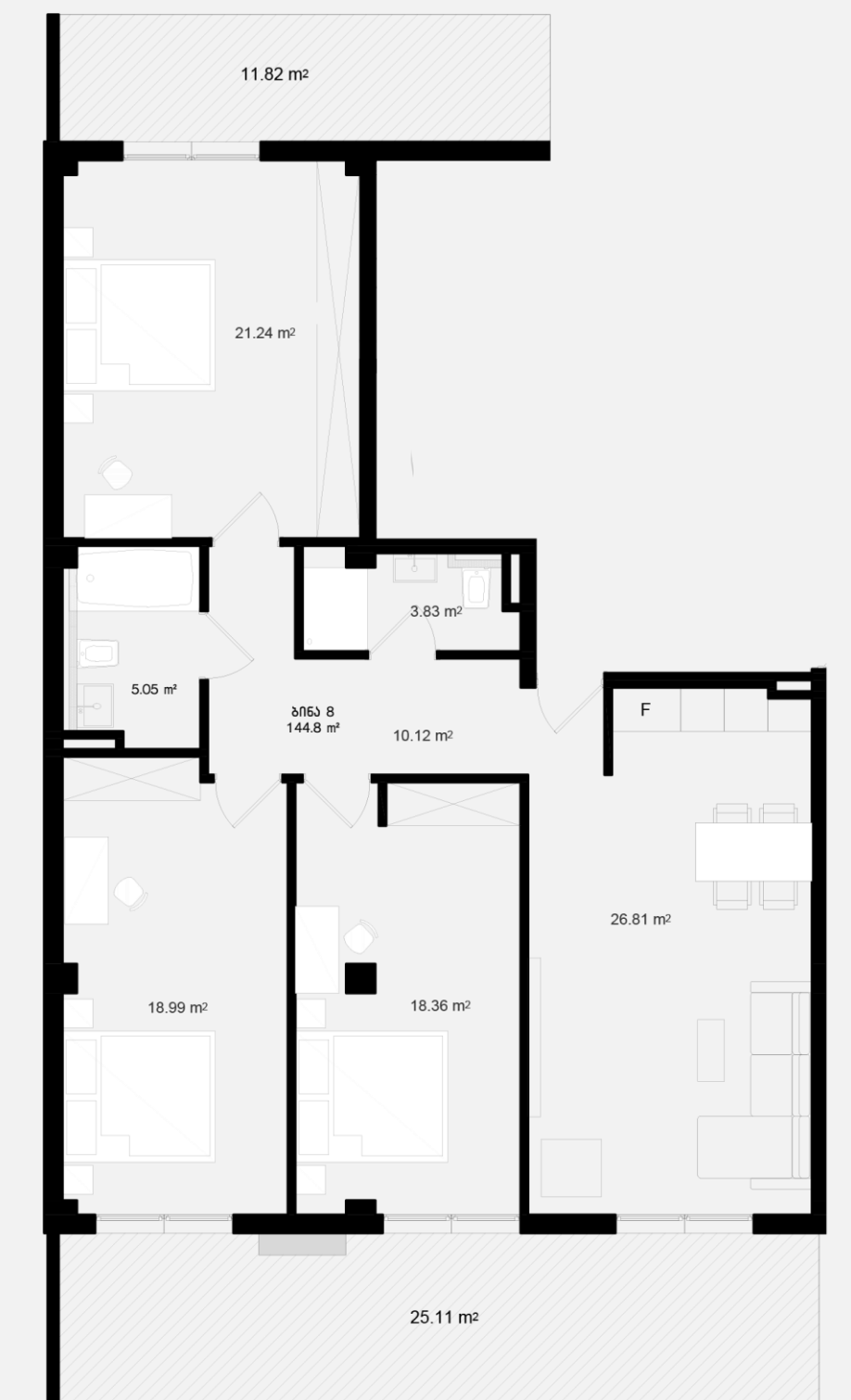




# III FLOOR - APARTMENT N8

3 BEDROOMS - 144.8 SQ.M

- Price per sq.m - **1700\$**
- Price per sq.m of the Balcony - **1360\$**
- The total price of the apartment - **233.410\$**





# APARTMENTS SALES CONDITION

**APARTMENTS WILL BE HANDED OVER IN WHITE FRAME CONDITION:**

## **YOU WILL FIND IN APARTMENT:**

- Aluminum doors and windows
- Plastered internal partitions
- Stretched floors
- External façade covered with stone
- Utilities are brought to the apartment
- Tiles laid on the balconies





# TERMS OF PAYMENT

An apartment in the Rema Lisi project can be purchased with internal installment:

- 20% initial payment
- 12-month installment plan

The project is financed by TBC Bank, therefore you have the opportunity to benefit from a simplified mortgage loan.













REMA

Development



2 502 202

LISI, IX LANE OF TSATSKHVEBI STREET

WWW.REMA.GE